

# PUMP PRESSURE CONTROLLER & DC PUMP CONTROL

2022

EDITION FOR  
SNOWATE CATALOG

## Snowate

Hengshui Snowate Environmental  
Technology Co., Ltd.



LS-12  
380V



LS-12  
220V



LS-1



LS-1  
2.2KW 3HP  
40(25)A



LS-2



LS-14



LS-3  
(RED)  
ADJUSTMENT



LS-3B



LS-3  
(BLUE)  
ADJUSTMENT



LS-5



LS-4  
With Europe  
Socket



LS-7  
With Timer



LS-6A



LS-6



LS-11



LS-6B



LS-6B  
(PLUS)



LS-8  
(DRAK BLUE)



LS-8  
(BLACK)



LS-8  
(TRANSPARENT)



LS-8  
(HALF  
TRANSPARENT)



LS-8  
(NO PRESSURE  
GAUGE)



LS-8A



LS-8A  
(NO PRESSURE  
GAUGE)



LS-13  
TIMER



MC-1     MC-2     MC-3 (FEMALE)     MC-3A     MC-5



MC-8     MC-9     220-240V     380V     MC-9A



MC-5A     MC-6     MC-7



220-240V FOR AIR COMPRESSOR     380V FOR AIR COMPRESSOR     MC-10     MC-11



MC-12     MC-13     MC-14     MC-15



MLSP 110(G 1/2")     MLSP     MLSP Dual     BRASS FIVE WAY



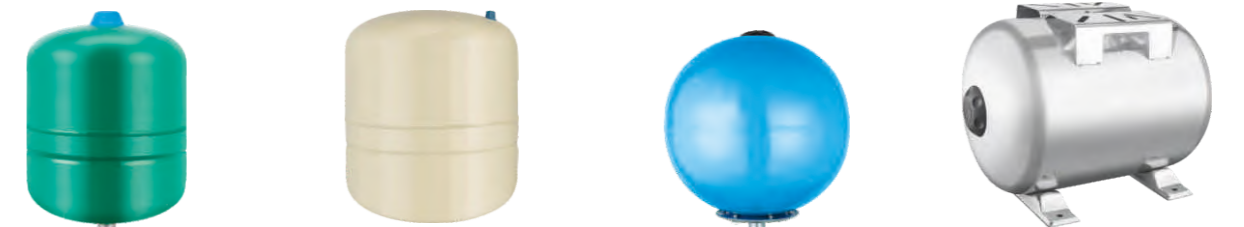
FLO-1     FLO-2     FLO-3     FLO-4



FLO-5     FLO-6     FLO-7     FLO-8



FLO-9     径向压力表 RADIAL PRESSURE GAUGE     轴向压力表 AXIAL PRESSURE GAUGE     V-12L



8L/19L/24L     8L/19L/24L     R-24L     SH-24L/50L/100L

## LS-12 WATER PUMP INTELLIGENT CONTROLLER

技术参数/Technical Parameters:

型号 Type	LS-12 THREE PHASE 380V
功率 Power	0.75-4KW / 0.75-7.5KW 0.75-11KW / 0.75-15KW
频率 Frequency	50/60Hz
包装尺寸 Packing Size(cm)	49 × 25.5 × 32.2
数量 PCS/CTN	6
净重 N.W.(kgs)	5.82
毛重 G.W.(kgs)	6

**MAIN FEATURES:**

- Built in Function Switch To Apply Different Application
- Applied For Water Supply By Liquid Level Control
- Applied For Water Supply By pressure Control
- Applied For Water Drainage By Liquid Level Control
- Computer Main Board And Module For Industrial & Civil Pump
- Auto /Manual Switch Push Button Calibration
- Pump Stalled Protection Transient Surge Protection
- Over Current Protection Under Voltage Protection
- Open Phase Protection
- Prompt For Uncompleted Parameter Calibrating
- Dry Running Protection Without Installing Float Switch Or Liquid Probe In The Well
- Pump Accumulative Running Time Displaying
- Pump Last Five Fault Record Displaying
- Displays Pump Running Information
- RS485 Communication Interface
- Rapid Cycle Protection
- Pump Shaft Rust Protection



## LS-12 WATER PUMP INTELLIGENT CONTROLLER

技术参数/Technical Parameters:

额定电压 Voltage	220V-240V
功率 Power	0.75-2.2kW
频率 Frequency	50/60Hz
包装尺寸 Packing Size(cm)	51.5 × 38.5 × 58
数量 PCS/CTN	12
净重 N.W.(kgs)	15.1
毛重 G.W.(kgs)	16.1

- Lower Voltage Protection
- The inside have the function for auto start in pre-set water level
- And can be stop in pre-set water level
- And also it can be auto restart after the pipe no water

SINGLE PUMP CONTROL PANEL, APPLIED FOR:



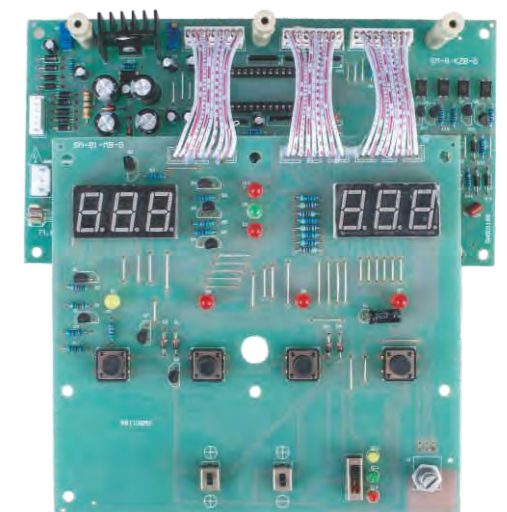
220V



380V



380V



kW	0.37	0.55	0.75	1.1	1.5	2.2	3	4	5.5	7.5	11	15	18.5	22	30	37	45	55
HP	0.5	0.75	1	1.5	2	3	4	5	7	10	15	20	25	30	40	50	60	70



# LS-1

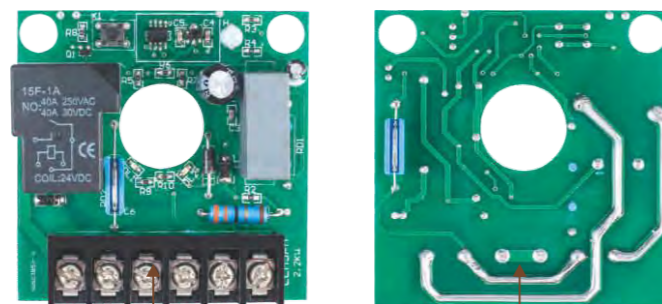
技术参数/Technical Parameters:

电压 Voltage	AC 220V/110V DC 12V 24V 36V 48V
频率 Frequency	50/60Hz
最大电流 Max Current	10A 16A 25A
最大功率 Max Power	1.1 kW 2.2 kW
启动压力 Start Pressure	0.8bar、1.2bar、1.5bar、2.2bar
最大工作压力 Max Working/Pressure	10bar
接口 Joointscrew	G1
保护等级 Protection/Grade	IP65
温度 Temperature	90°C
包装尺寸 Packing Size(cm)	52 × 47 × 38
数量 PCS/CTN	12
净重 N.W.(kgs)	14.64
毛重 G.W.(kgs)	18.84

Optional color



Adjustment



LS-1 2.2KW Auto Restart

# LS-1 2.2KW 3HP 40(25)A

PRESSURE CONTROL

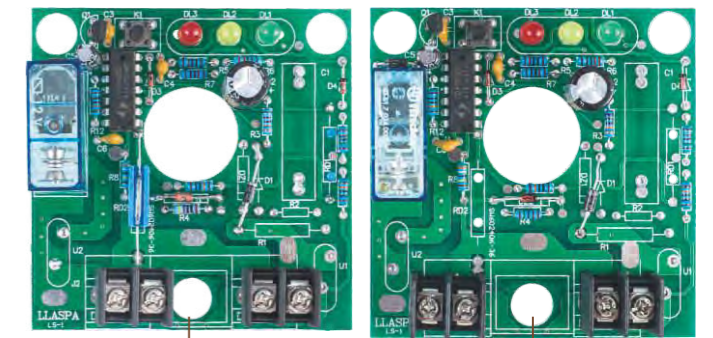
- 1.Connector:25A
- 2.Max Rate Current:40(25A)
- 3.Max Pressure:10bar
- 4.Rate Voltage:220-240V
- 5.Max Power:3HP2.2kW
- 6.Auto Restart Function After No Water



# LS-1

## CONTROL FOR DC PUMP

- 1.Connector:20A
- 2.Max Rate Current:16A
- 3.Max Pressure:10bar
- 4.Rate Voltage:DC 12V 24V 36V 48V
- 5.Pump Head Require: ≥25meter



DC12V  
DC36V

DC24V  
DC48V

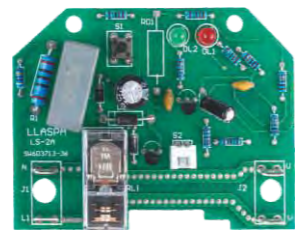


Model	Voltage (A)	Power (V)	Max. Suct (M)	Max Flow (M³/H)	Max Head (M)	Outlet (Inch)
DC-QB60-12V	12	180	5	1.5	15	0.75"0.75'
DC-QB60-24V	24	280	5	1.5	25	0.75"0.75'
DC-QB60-48V	48	350	5	1.5	35	0.75"0.75'

Model	Voltage (A)	Power (V)	Max Flow (M³/H)	Max Head (M)	Outlet (Inch)	Cable (M)
DC-3QGD-12V	12	200	1.5	50	1'	12
DC-3QGD-24V	24	400	1.5	50	1'	17
DC-3QGD-36V	36	300	1.5	50	1'	17
DC-3QGD-48V	48	400	1.5	50	1'	17

Model	Voltage (A)	Power (V)	Max Flow (M³/H)	Max Head (M)	Outlet (Inch)	Cable (M)
DC-4QGD-12V	12	200	2	25	1'	20
DC-4QGD-24V	24	400	3	50	1'	20
DC-4QGD-36V	36	300	3	40	1'	20
DC-4QGD-48V	48	400	3	60	1'	20
DC-4QGD-72V	72	600	3	70	1'	20

Model	Voltage (A)	Power (V)	Max Flow (M³/H)	Max Head (M)	Outlet (Inch)	Cable (M)
DC-4QJD-12V	12	200	2.5	20	1'	20
DC-4QJD-24V	24	400	3	40	1'	20
DC-4QJD-48V	48	400	3	50	1'	20
DC-4QJD-72V	72	600	3	60	1'	20
DC-4QJD-96V	96	750	3	75	1'	20
DC-4QJD-48V	48	750	12	30	2'	20

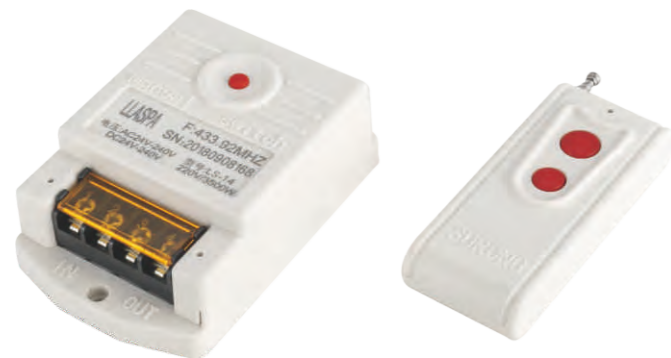


## LS-2

技术参数/Technical Parameters:

电压 Voltage	220V/110V
频率 Frequency	50/60Hz
最大电流 Max Current	10A
最大功率 Max Power	1.1kW
启动压力 Start Pressure	1.0~3.5bar
最大工作压力 Max Working/Pressure	10bar

接口 Jointscrew	G1
保护等级 Protection/Grade	IP65
温度 Temperature	90°C
包装尺寸 Packing Size(cm)	42 × 32.5 × 21.5
数量 PCS/CTN	12
净重 N.W.(kgs)	6.12
毛重 G.W.(kgs)	8.62



## LS-14 REMOTE CONTROL SWITCH

F: 433.92MHZ  
 MAX POWER: AC220V ≤ 3500W  
 Voltage: AC24V-240V  
 DC24V-240V  
 Distance: 1000m  
 Frequency: 50Hz/60Hz or DC



LS-4  
with europe socket



## LS-3/4/5/7

技术参数/Technical Parameters:

电压 Voltage	220V/110V	
频率 Frequency	50/60Hz	
最大电流 Max Current	10A	
最大功率 Max Power	1.1kW	
启动压力 Start Pressure	1.0~3.5bar	
最大工作压力 Max Working/Pressure	10bar	
接口 Jointscrew	G1	
保护等级 Protection/Grade	IP65	
温度 Temperature	90°C	
	LS-4	LS-3/5
包装尺寸 Packing Size(cm)	57.5 × 54 × 25	46.5 × 42.7 × 25
数量 PCS/CTN	12	12
净重 N.W.(kgs)	16.5	13.56
毛重 G.W.(kgs)	(19.18)	(16.42)



LS-7  
With Timer



1.1KW/220V



Pictures based on objects are for reference only  
 Time Can Be Change

anti-rust function  
 24hours run 5seconds

- 12小时 间隔 Repeat
- 12hours 循环 Run
- 6hours
- 2hours 启动 Start
- 1hours



LS-6A



LS-6A



LS-6



LS-11



LS-6B

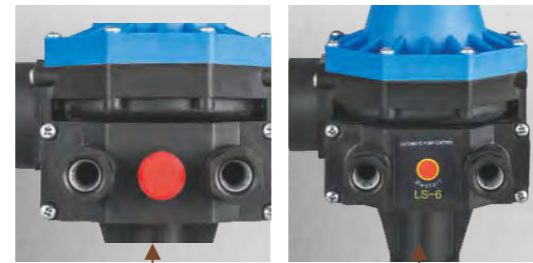


LS-6B (PLUS)

## LS-6/6A/6B/11

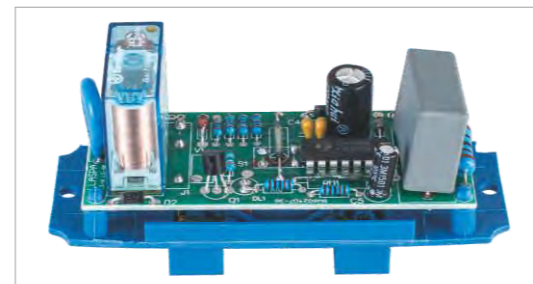
技术参数/Technical Parameters:

电压 Voltage	220V/110V
频率 Frequency	50/60Hz
最大电流 Max Current	10A
最大功率 Max Power	1.1kW
启动压力 Start Pressure	0.8 1.5 2.2 bar
最大工作压力 Max Working/Pressure	10bar
接口 Joinscrew	G1
保护等级 Protection/Grade	IP65
温度 Temperature	90°C
包装尺寸 Packing Size(cm)	53 × 44 × 27
数量 PCS/CTN	12
净重 N.W.(kgs)	10.68
毛重 G.W.(kgs)	13.36



LS-6A Plastic Button

LS-6 PVC Button



LS-8 (DRAK BLUE)



LS-8 (SKY BLUE)



LS-8 (BLACK)



LS-8 (TRANSPARENT)



LS-8 (HALF TRANSPARENT)



LS-8 (NO PRESSURE GAUGE)



Adjustment

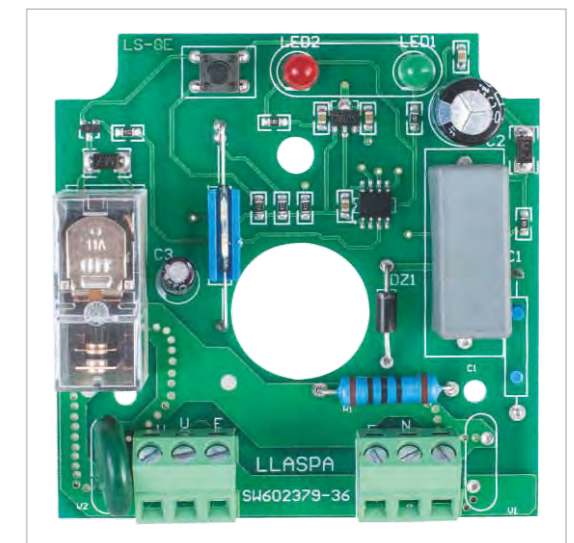


Not Adjustment

## LS-8

技术参数/Technical Parameters:

电压 Voltage	220V/110V
频率 Frequency	50/60Hz
最大电流 Max Current	10A
最大功率 Max Power	1.1kW
可调压力 Adjustment Pressure	1.0~3.5bar
不可调压力 Not Adjustment Pressure	0.8 1.2 1.5 2.2bar
最大工作压力 Max Working/Pressure	10bar
接口 Joinscrew	G1
保护等级 Protection/Grade	IP65
温度 Temperature	90°C
包装尺寸 Packing Size(cm)	60 × 47 × 20
数量 PCS/CTN	12
净重 N.W.(kgs)	13.03
毛重 G.W.(kgs)	15.58



Auto Start



**LS-8A**



**LS-8A  
(NO PRESSURE  
GAUGE)**



LS-8A(DRAK BLUE)  
LS-8A(深蓝)



NO PRESSURE  
GAUGE



NO PRESSURE  
GAUGE



Adjustment



Not Adjustment

## LS-8A/13

技术参数/Technical Parameters:

电压 Voltage	220V/110V
频率 Frequency	50/60Hz
最大电流 Max Current	10A
最大功率 Max Power	1.1kW
启动压力 Start Pressure	1.0~3.5bar
最大工作压力 Max Working/Pressure	10bar
接口 Joinscrew	G1
保护等级 Protection/Grade	IP65
温度 Temperature	90°C
包装尺寸 Packing Size(cm)	61 × 47.5 × 25
数量 PCS/CTN	12
净重 N.W.(kgs)	13.5
毛重 G.W.(kgs)	16.1

## LS-13 TIMER

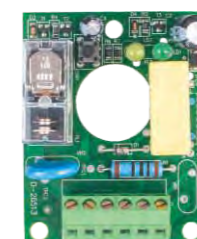


Pictures based on objects are  
for reference only



- 12小时 间隔 Repeat
- 12hours 间隔 Repeat
- 6hours 循环 Run
- 2hours 循环 Run
- 1hours 启动 Start

anti-rust function  
24hours run 5seconds



NO PRESSURE  
GAUGE

## LS-9

技术参数/Technical Parameters:

电压 Voltage	220V/110V
频率 Frequency	50/60Hz
最大电流 Max Current	10A
最大功率 Max Power	1.1kW
启动压力 Start Pressure	1.5bar/2.2bar
接口 Joinscrew	G1
保护等级 Protection/Grade	IP65
温度 Temperature	90°C
包装尺寸 Packing Size(cm)	47.5 × 41 × 34
数量 PCS/CTN	12
净重 N.W.(kgs)	9.9
毛重 G.W.(kgs)	12.6

## LS-30

技术参数/Technical Parameters:

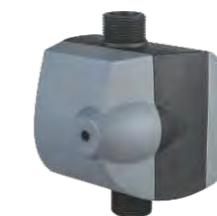
电压 Voltage	220V/110V
频率 Frequency	50/60Hz
最大电流 Max Current	10A
最大功率 Max Power	1.1kW
启动压力 Start Pressure	1.0~3.5bar
最大工作压力 Max Working/Pressure	10bar
接口 Joinscrew	G1
保护等级 Protection/Grade	IP65
温度 Temperature	90°C
包装尺寸 Packing Size(cm)	44 × 39 × 31.5
数量 PCS/CTN	12
净重 N.W.(kgs)	9.75
毛重 G.W.(kgs)	14.2



**LS-30**



**LS-30(MAX)**



ADJUSTMENT 可调



## MC-1

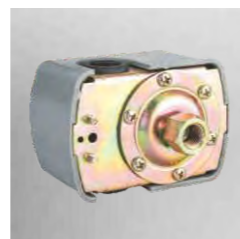
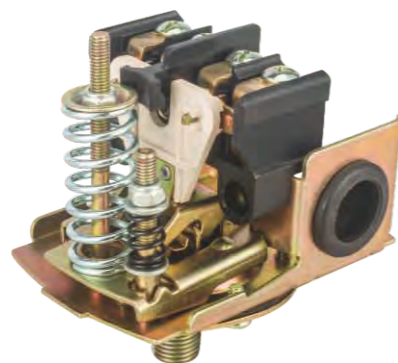
技术参数/Technical Parameters:

电压 Voltage	110-120V 220-240V 220-240V
额定电流 Rated Current	1.5HP/20A 2.0HP/12A 3.0HP/17A
频率 Frequency	50/60Hz
最低压力 Lowest Pressure	20PSI
最高压力 Highest Pressure	80PSI
压力设定 Pressure Setting	20-40PSI/30-50PSI/40-60PSI
包装尺寸 Packing Size(cm)	51×37×21
数量 PCS/CTN	50
净重 N.W.(kgs)	16.7
毛重 G.W.(kgs)	17.6

1BAR=0.1MPA=14.5PSI

PSI 单位lb/in2 磅/升

公斤BAR	1.4-2.8	2.1-3.5	2.8-4.2	4.8-7
PSI	20-40	30-50	40-60	70-100



## MC-2

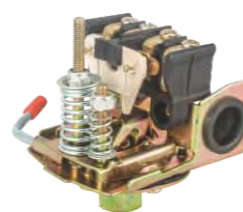
Lower Water Level Protect Function

技术参数/Technical Parameters:

电压 Voltage	110-120V 220-240V 220-240V
额定电流 Rated Current	1.5HP/20A 2.0HP/12A 3.0HP/17A
频率 Frequency	50/60Hz
最低压力 Lowest Pressure	20PSI
最高压力 Highest Pressure	80PSI
压力设定 Pressure Setting	20-40PSI/30-50PSI/40-60PSI
包装尺寸 Packing Size(cm)	51×47.5×21
数量 PCS/CTN	50
净重 N.W.(kgs)	16.7
毛重 G.W.(kgs)	17.6

PSI 单位lb/in2 磅/升

PSI	20-40PSI
-----	----------



## MC-3/3A

技术参数/Technical Parameters:

电压 Voltage	110-120V 220-240V 220-240V
最大电流 Max Current	1.5HP/20A 2.0HP/12A 3.0HP/17A
频率 Frequency	50/60Hz
最高压力 Highest Pressure	3bar
启动压力 Pressure Setting	1.0-1.7bar / 1.1-1.8bar 1.4-2.2bar/ 2.2-3.0bar
包装尺寸 Packing Size(cm)	53×27×17.5
数量 PCS/CTN	100
净重 N.W.(kgs)	19.5
毛重 G.W.(kgs)	21

1BAR=0.1MPA=14.5PSI

PSI 单位lb/in2 磅/升

公斤BAR	1.0-1.8	1.5-2.2	1.8-2.6	2.2-3.0
PSI	14.5-26	20-30	26-38	32-44



MC-3(MALE)



MC-3(FEMALE)



MC-3A





### For Water Pump



## MC-5

技术参数/Technical Parameters:

电压 Voltage	110-120V 220-240V 220-240V
额定电流 Rated Current	1.5HP/20A 2.0HP/12A 3.0HP/17A
频率 Frequency	50/60Hz
最低压力 Lowest Pressure	20PSI
最高压力 Highest Pressure	80PSI
压力设定 Pressure Setting	20-40PSI/30-50PSI/40-60PSI
	MC-5
包装尺寸 Packing Size(cm)	51 × 37 × 21
数量 PCS/CTN	50
净重 N.W.(kgs)	16.7
毛重 G.W.(kgs)	18.3

1BAR=0.1MPA=14.5PSI  
PSI 单位lb/in2 磅/升

公斤BAR	1.4-2.8	2.1-3.5	2.8-4.2	4.8-7
PSI	20-40	30-50	40-60	70-100

### MC-9A For Dirty Water Pump

技术参数/Technical Parameters:

额定电压 Voltage	110-120V 220-240V
额定电流 Rated Current	16A(10A) 20A
压力设定 Pressure Setting	15-80PSI
压力范围 Pressure Range	15-35PSI, 20-40PSI, 30-50PSI, 40-60PSI, 50-80PSI, 95-125PSI, 120-150PSI, 135-175PSI
螺纹接口 Joint Screw	1/4"
包装尺寸 Packing Size(cm)	FEMALE 54.5 × 35 × 22.5 43MM MALE 55 × 36 × 27
数量 PCS/CTN	50
净重 N.W.(kgs)	18.7
毛重 G.W.(kgs)	21.1



1BAR=0.1MPA=14.5PSI

公斤BAR	0.5-1.5
-------	---------

### For Water Pump



## MC-8

技术参数/Technical Parameters:

压力范围 Pressure Range	15-80PSI
压力设置 Pressure Setting	15-35PSI、20-40PSI、30-50PSI 40-60PSI、50-80PSI
额定电流 Rated Current	12A
额定电压 Rated Voltage	110-120V 220-240V 380V
频率 Frequency	50/60Hz
最高环境温度 Max Ambient Temperature	40°C
最高介质温度 Max Liquid Temperature	60°C
Carton Size (cm)	61.5 × 33.7 × 39.2
PCS/CTN	30
N.W.(KGS)	18.65KGS
G.W(KGS)	19.65KGS



PPR管材直径是指外径, PPR配件直径是指内径, 应为配件是要套在管材上热熔的。  
直径20mm=4分管=1/2螺纹 直径25mm=6分管=3/4螺纹 直径32mm=1寸管=1"螺纹  
直径40mm=1.2寸管=1 1/4螺纹 直径50mm=1.5寸管=1 1/2螺纹 直径63mm=2寸管=2"螺纹  
例如T40x1/2F 头部 "T" 代表了三通 "S" 代表直接 "L" 代表弯头 尾部 可分为 "F" 代表内丝 "M" 代表外丝  
40代表PPR管的直径大小 (此处是接PPR管材的), 1/2F代表1/2内丝螺纹

### For Water Pump



220-240V



380V



PSG-1



## MC-9

技术参数/Technical Parameters:

额定电压 Voltage	110-120V 220-240V 380V
额定电流 Rated Current	16A(10A) 20A
压力设定 Pressure Setting	15-80PSI
压力范围 Pressure Range	15-35PSI, 20-40PSI, 30-50PSI, 40-60PSI, 50-80PSI, 95-125PSI, 120-150PSI, 135-175PSI
螺纹接口 Joint Screw	1/4"
包装尺寸 Packing Size(cm)	FEMALE 54.5 × 35 × 22.5 43MM MALE 55 × 36 × 27
数量 PCS/CTN	50
净重 N.W.(kgs)	18.7
毛重 G.W.(kgs)	21.1

注: single phase or three phase for choose 单相或三相可选择

1BAR=0.1MPA=14.5PSI

PSI 单位lb/in2 磅/升

公斤BAR	1.4-2.8	2.1-3.5	2.8-4.2	4.8-7
PSI	20-40	30-50	40-60	70-100

外螺纹长度: 26 36 43毫米  
Male Screw Size:26mm 36mm 43mm



## MC-5A For Air compressor

技术参数/Technical Parameters:

电压 Voltage	110-120V 220-240V 220-240V
额定电流 Rated Current	1.5HP/20A 2.0HP/12A 3.0HP/17A
频率 Frequency	50/60Hz
最低压力 Lowest Pressure	20PSI
最高压力 Highest Pressure	80PSI
压力设定 Pressure Setting	20-40PSI/30-50PSI/40-60PSI
包装尺寸 Packing Size(cm)	MC-5A 51 × 43 × 20
数量 PCS/CTN	50
净重 N.W.(kgs)	18
毛重 G.W.(kgs)	20

1BAR=0.1MPA=14.5PSI

PSI 单位lb/in2 磅/升

公斤BAR	5-8
PSI	70-116



## MC-6 For Air compressor

技术参数/Technical Parameters:

输入电压 Input Voltage	110-120V 220-240V
频率 Frequency	50/60Hz
电流 Current	16(10)A
功率 Power(K.W)	1.1KW/2.2KW
功率 Power(HP)	1HP/1.5HP
接通-断开压力 On-off pressure	95-125PSI/120-150PSI/135-175PSI 5.5-8BAR/7-10BAR/10-12.5BAR
最大承受压力 Max Pressure	12.5bar
温度参数/介质温度 Temperature Parameters	0-55℃

For Air compressor

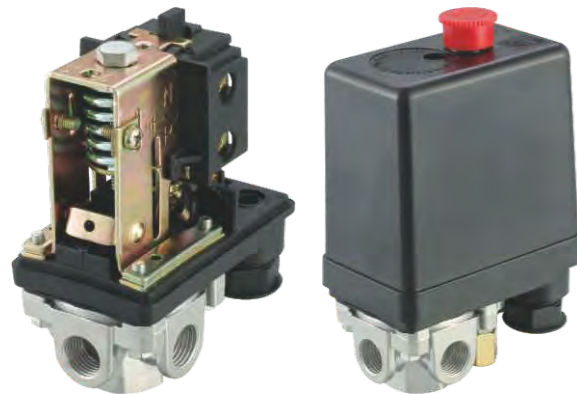
MC-7

技术参数/Technical Parameters:

额定电压 Voltage	110-120V 220-240V 380V
最低压力 Lowest Pressure	20PSI
最高压力 Highest Pressure	80PSI
压力设定 Pressure Setting	20-40PSI 30-50PSI 40-60PSI
包装尺寸 Packing Size(cm)	58 x 46 x 17
数量 PCS/CTN	50
净重 N.W.(kgs)	16
毛重 G.W.(kgs)	18

1BAR=0.1MPA=14.5PSI  
PSI 单位lb/in2 磅/升

公斤BAR	5-8
PSI	70-116



220-240V  
FOR AIR COMPRESSOR



380V  
FOR AIR COMPRESSOR



PERFORMANCE PARAMETERS

Model	Type	input Voltage (V)	Max Current (A)	Joint Screw	On-OFF Pressure
MC-7	One way	3phase 380V	10A	Female 1/4"	5.5-8bar
MC-7	Four way	3phase 380V	10A	Female 1/4"	5.5-8bar

FUNCTION:

- When the internal pressure of pipe is higher than the setting pressure disconnect the load power supply(air compressor), connect the load power supply(compressor),connect the load power supply(air compressor) when below the setting pressure;
- An independent set of adjusting screw, used to connect the disconnect the pressure;
- Turn offer the released valve, under non-loaded the valve will be opened to discharge the air in compressor.
- With auto-on-offer button



MC-10

PRESSURE SWITCH (5-12BAR) For Air compressor

MC-10 pressure switches are used to regulate tank pressure between two preset values on small electrically driven air compressors. Equipped with an unloader valve, they could prevent compressors from starting under load. The auto-off disconnect lever for manual cut off the compressor. Both one and four-ports manifold style are available which provides easy mounting of valves and gauges.

PERFORMANCE PARAMETERS

Model	MC-10/1H	MC-10/4H
Media	Air	Air
Operating Pressure Range	5bar~12bar	5bar~12bar
Differential Pressure	2bar	2bar
Factory Setting	6bar~8bar/8bar~10bar	6bar~8bar/8bar~10bar
Operating Temperature Range	-30~55C° C	-30~55C° C
Electrical Rating	240V, 20A, 50Hz	240V, 20A, 50Hz
Contact Arrangement	Normal Close(NC)	Normal Close(NC)
Port	One port or Four ports available	One port or Four ports available
Pipe Fittings	G1/4, G3/8 or 1/4, 3/8 NPT Female	G1/4, G3/8 or 1/4, 3/8 NPT Female

Other Pressure Settings and Differential Pressure are available on request.  
Conversion: 1Mpa =10bar, 1bar = 14.5PSI, 1Kg/cm<sup>2</sup> = 14.2PSI

MC-11  
For Air compressor

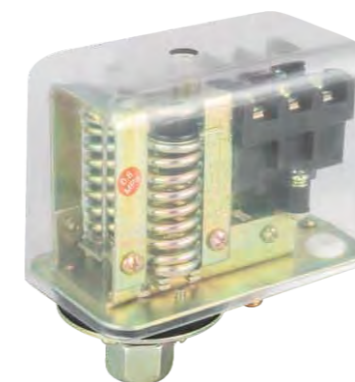
Pressure Switch (4-12Bar)

MC-11 pressure switches are used to regulate the tank pressure between two preset values on a 3 phase electrically driven air compressors. They are available with an unloader valve, which prevents compressors from starting under load. On-Off knob for manual cutting off the compressor.

PERFORMANCE PARAMETERS

Model	MC-11
Media	Air
Operating Pressure Range	4bar~12.5bar
Differential Pressure	2bar~3bar
Factory Setting	5bar~8bar/5.5bar~8bar/9bar~12bar
Operating Temperature Range	-30~55C° C
Electrical Rating	380V, 20A, 50Hz
Contact Arrangement	Normal Close(NC)
Port	One port or Four ports available
Pipe Fittings	G1/4, G3/8 or 1/4, 3/8 NPT Female

Other Pressure Settings and Differential Pressure are available on request.  
Conversion: 1Mpa =10bar, 1bar = 14.5PSI, 1Kg/cm<sup>2</sup> = 14.2PSI





MC-12



MC-13



MC-14

额定电压 (V) Rated Voltage(V)		功率 Horsepower	125 VAC	250 VAC
额定电流 (A) Rated Amps(A)				
无感电流 Non-inductive Amps		1	15	15
感应电流 Inductive Amps	恒定电流 Rated Amps	0.75	3.5	2.5
	瞬时电流 Locked Rotor Amps	0.45	21	15

额定电压 (V) Rated Voltage(V)		功率 Horsepower	125 VAC	250 VAC
额定电流 (A) Rated Amps(A)				
无感电流 Non-inductive Amps		1	15	15
感应电流 Inductive Amps	恒定电流 Rated Amps	0.75	3.5	2.5
	瞬时电流 Locked Rotor Amps	0.45	21	15

电气参数 Electrical Parameter	120VAC	208 VAC	240 VAC	277 VAC
功率 Horsepower	1	1	1	-
满载电流 Full Load Amps	16.0	8.8	8.0	-
瞬时电流 Locked Rotor Amps	96.0	52.8	48.0	-
无感电流 Non-inductive Amps	16.0	16.0	16.0	16.0
一般用途的电流额定值 Pilot Duty	125VA at 24/277 VAC			

产品	内盒 (长x宽x高) cm	外箱 (长x宽x高) cm	只/箱	净重/箱 (KG)	毛重/箱 (KG)	体积 (CBM)
MC-13	9x7x15.7	48.5x38x32.5	50	20.0	22.5	0.059
MC-14	11.1x7.8x23.7	43x35.5x49.5	30	21.0	23.8	0.075
三通水流开关 DN25 MC-12(25A/25B)	9x7x15.7	38.0x19.0x33.0	20	16.0	17.0	0.023
三通水流开关 DN20 MC-12(20A/20B)				15.0	16.0	
三通水流开关DN15 MC-12(15A/15B)				14.0	15.0	
压力开关MLSP系列	8.4x5.2x10.8	43.8x29.5x24.5	50	20.5	21.8	0.031
双压控制器MLSP830系列	10.5x5.8x11.6	33x30.5x25.2	30	17.4	18.2	0.025



MC-15

magnetic starter is mainly applied to circuit of AC 50 or 60Hz, voltage up to 550v for far distance making and breaking circuit and frequency starting and controlling motor.It has the features of small volume, light weight,low power consumption, high efficiency,safe and reliable performance etc.

Electrical Parameter

功率 Power	电压 Voltage	额定电流 Rated Current	热继电器元件调节范围 Thermal Relay Components Adjustment range
0.75kW	380V	2.1A	1.7-2.5A
1.1kW	380V	2.5A	2-3A
1.5kW	380V	3.6A	2.8-4.4A
2.2kW	380V	5A	5.5-8A
3kW	380V	6.6A	7-11A
4kW	380V	9A	9-13A
5.5kW	380V	11A	12-18A
7.5kW	380V	15A	12-18A
7.5kW	380V	15A	12-18A
11kW	380V	22A	20-32A
15kW	380V	30A	28-45A
18.5kW	380V	37A	40-63A
22kW	380V	44A	40-63A
30kW	380V	60A	53-85A

MLSP

技术参数/Technical Parameters:

The adjusting range is: -0.2-7.5(bar)  
Mechanical back to the poor: 0.7-4(bar)  
Maximum working pressure: 17(bar)

The maximum test pressure: 22(bar)  
Pressure connection: G1/4A  
Contact material: Ag



MLSP110(G 1/2")

单压控制器

SINGLE RESSURE CONTROL SPECIFICATION

型号 Model	压力范围 Pressure Range(bar)	压差 Differential Pressure(bar)	出厂设定 Factory Setting(bar)		最大气密试验压力 Max.gas Tight Test Pressure(bar)
			fig.1	fig.2	
MLSP502	-0.5~2	0.2~0.7	1	0.5	16.5
MLSP503	-0.5~3	0.35~1.5	2	1	16.5
MLSP506	-0.5~6	0.6~4	3	2	16.5
MLSP506M	-0.5~5.5	≤1	手动复位 manual reset	3	16.5
MLSP110	1~10	1~3	6	5	16.5
MLSP516	5~16	2~5	10	8	33
MLSP520	5~20	2~5	16	14	33
MLSP530D	5~30	3~10	20	15	33
MLSP530	8~30	3~5固定fixation	20	15~17	33
MLSP503M	8~30	≤5	20	手动复位 manual reset	33



双压控制器

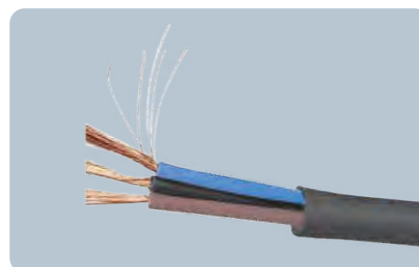
DUAL PRESSURE CONTROLLER SPECIFICATION

型号 Model	低压 Low Pressure		高压 High Pressure		低压 Low Pressure	高压 High Pressure	低压 Low Pressure	高压 High Pressure		
	压力范围 Pressure Range(bar)	压差 Differential Pressure(bar)	压力范围 Pressure Range(bar)	压差 Differential Pressure(bar)	复位形式 Format Form		出厂设定 Factory Setting(bar)			
					fig.2	fig.1	fig.2	fig.1		
MLSP830	-0.5~6	0.6~4	8~30	3~5固定fixation	自动auto	自动auto	3	2	20	15
MLSP830HM	-0.5~6	0.6~4	8~30	≤5	自动auto	手动manual	3	2	20	手动manual
MLSP830HLM	-0.5~5.5	≤1	8~30	≤5	手动manual	手动manual	手动manual	3	20	手动manual



FLO-10

Cable	PCS/CTN	CTN/SIZE	Gross Weight
2M	20PCS	45.5X42X24.2	12.94KGS
5M	20PCS	45.5X42X24.2	18.65KGS
10M	20PCS	53X50X34	30KGS
15M	20PCS	53X50X34	40.55KGS
20M	20PCS	53X50X34	50.55KGS



技术参数/Technical Parameters:

额定电压 Voltage	AC 125V/250V
额定电流 Rated Current	AC 16(4A)
频率 Frequency	50/60Hz
温度 Temperature	90℃
保护等级 Protection/Grade	IP68

Diameter Copper wire pcs

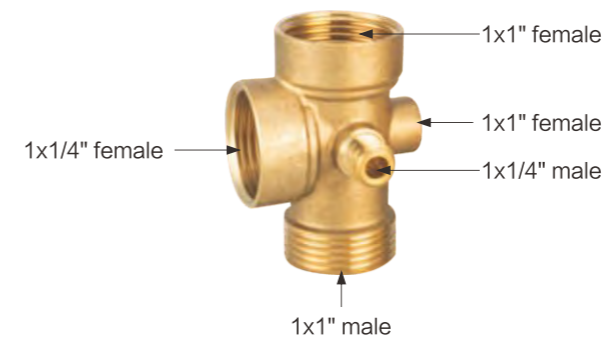
3X1	20UM	0.2MM	32PCS
3X0.75	20UM	0.2MM	24PCS
3X0.5	20UM	0.2MM	16PCS
3X1	15UM	1.5MM	56PCS
3X0.75	15UM	1.5MM	42PCS
3X0.5	15UM	1.5MM	28PCS

1um=0.01MM

CIRCUIT BOARD



1.Auto-fill-water modes  
connect the control's blue line to electric pump, black line is connected to zero-line, black, brown line can not be connected and should be insulated.  
2.Auto-drainage and lack-water protection modes  
connect the control's brown line to electric pump,the black line is connected to the zero-line, the blue line can not be connected and should be insulated.



规格 Height	常规重量 Weight
7cm	135、150
装箱数 PCS/CTN	尺寸 CBM
100	54x28x18



Model	Pressure range	Cover material	Connector material	Connection type	Connector size (G)	PCS/CTN	Weight (kg)	Size (cm)
Y40	0-100PSI	iron	copper	axial	1/4	300	18.8	44 × 29 × 24
Y40	0-100PSI	iron	copper	The radial	1/4	300	19.8	44 × 29 × 24
Y40	0-180PSI	iron	copper	axial	1/8	300	11.5	44 × 29 × 24
Y50	0-180PSI	iron	copper	axial	1/4	200	15.8	44 × 29 × 27
Y50	0-180PSI	iron	copper	The radial	1/4	200	16.8	44 × 29 × 27
Y60	0-230PSI	iron	copper	The radial	1/4	200	21.9	40 × 30 × 25
Y68-006 fuel meter	0-350PSI	Stainless steel	copper	axial	1/4	100	20.2	38 × 28 × 25
Y68-006 fuel meter	0-350PSI	Stainless steel	copper	The radial	1/4	100	21.2	38 × 28 × 25
Y55-007 fuel meter	0-600PSI	Stainless steel	copper	axial	1/4	100	19.1	38 × 28 × 25
Y55-007 fuel meter	0-600PSI	Stainless steel	copper	The radial	1/4	100	20.1	38 × 28 × 25
Y45-008 fuel meter	0-100PSI	Stainless steel	copper	axial	1/4	200	21.4	38 × 28 × 25
Y45-008 fuel meter	0-100PSI	Stainless steel	copper	The radial	1/4	200	22.4	38 × 28 × 25

**Instructions**

Pressure gauge can be used in air compressor, washing machine, water pump, filter valve, water pipe network pressure detection precautions

1. Pressure gauge can measure the stability of the pressure, the maximum working pressure should not exceed the range of 2/3 when using the pressure gauge to measure the high pressure, the maximum working pressure should not exceed the range of 3/5.
2. In order to ensure the accuracy of the measurement, the minimum working pressure should not be less than 1/3 of the range

Product picture	Model	Describe	Specifications	Weight	Packing number	Size
	DS-52007	Nickel plated Copper connector, A bent pipe with 1 "nut, A 1 "outer tooth	50cm	330	50	58x32x20
			60cm	370	50	68x32x20
			100cm	530	40	105x32x18



**PRESSURE TANK**



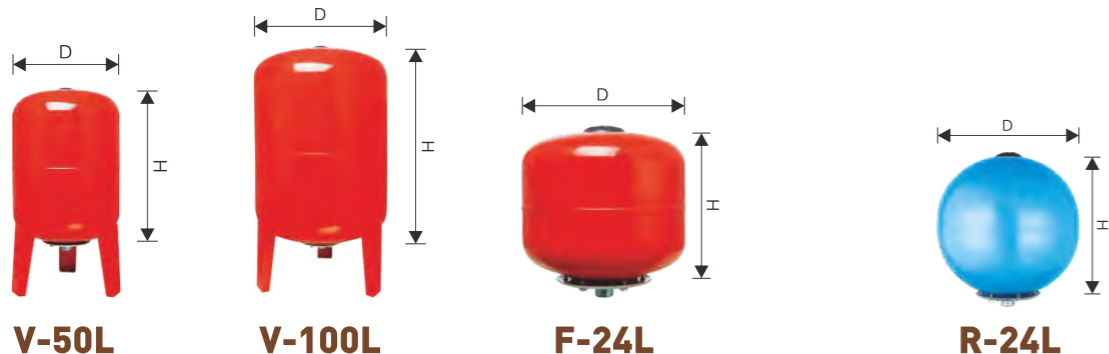
Model	Max.pressure (bar)	Precharge Pressure(bar)	Diameter (mm)	Height(mm)	Connector	Carton	Packing CBM
V-1L	4	1.3	106	100	G1/2"	20PCS	0.018
V-2L/A	4	1.5	112	215	G1/2"	20PCS	0.062
V-2L/B	4	1.5	105	187	G1/2"	20PCS	0.052

Model	Max.pressure (bar)	Precharge Pressure(bar)	Diameter (mm)	Height(mm)	Connector	G.W(kgs)	N.W.(kgs)	packing size (cm)
V-5L	8	1.5	170	281	G3/4"	1.35	1.24	15x15.5x30
V-8L	8	1.5	200	333	G3/4"	1.82	1.63	20.2x20.2x31.2
V-12L	8	1.5	208	320	G3/4",1"	3.3	2.88	29x28x36.5
V-19L	8	1.5	268	410	G3/4",1"	3.7	3.26	29x29x41
V-24L	8	1.5	268	430	G3/4",1"	3.89	3.42	29x28x45
V-36L	8	1.5	350	520	G3/4",1"	6.1	5.5	36x36x54.5

**SPECIFICATION**

1. For water system
2. Changable rubber membrane and flange
3. Carbon steel body
4. Natrual rubber membrane/EPDM membrane
5. Working temperature:  
 Natrual rubber:0°C-77°C  
 EPDM:-10°C-99°C

**PRESSURE TANK**

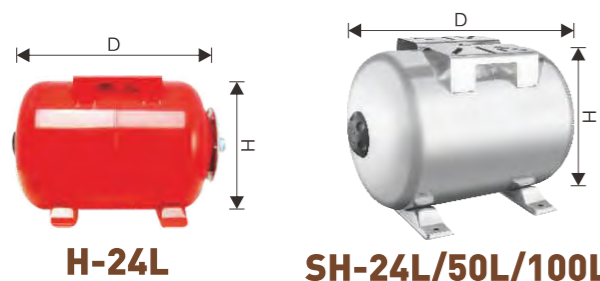


**V-50L**

**V-100L**

**F-24L**

**R-24L**



**H-24L**

**SH-24L/50L/100L**

**SPECIFICATION**

1. For water system
2. Changable rubber membrane and flange
3. Carbon steel body
4. Natrual rubber membrane/EPDM membrane
5. Working temperature:  
Natrual rubber:0°C-77°C  
EPDM:-10°C-99°C

Model	Max.pressure (bar)	Precharge Pressure(bar)	Diameter (mm)	Height(mm)	Connector	G.W(kgs)	N.W.(kgs)	packing size (cm)
V-50L	8	1.5	350	650	G3/4",1"	7.53	6.47	36x36x69
V-80L	8	1.5	400	765	G3/4",1"	11	10	44.5x44.5x71
V-100L	8	1.5	450	810	G3/4",1"	13.29	11.9	46x45.5x78
F-24L	8	1.5	330	345	G3/4",1"	3.85	3.27	36x36x31
R-24L	8	1.5	350	390	G3/4",1"	3.9	3.34	36x36x36
H-19L	8	1.5	268	410	G3/4",1"	4.7	4.2	29x29x40
H-24L	8	1.5	268	430	G3/4",1"	4.6	4.14	44x28.5x30
H50L	8	1.5	/	/	G3/4",1"	7	6.24	54.5x36.5x39.5
H80L	8	1.5	/	/	G3/4",1"	10.50	9.17	43x45x71
H100L	8	1.5	/	/	G3/4",1"	12.99	11.63	44.8x64x49.5

Code	Capacity Ltr	Gallons	Package(cm)	Max.Press.	Max.temp.	Connect.
SH-19	19L	5.02	40x27x31	5-8bar/72.5-116psi	77-99°C	G1"/G3/4"
SH-24	24L	6.3	45x27x31	5-8bar/72.5-116psi	77-99°C	G1"/G3/4"
SH-36	36L	9.5	41x36x39	5-8bar/72.5-116psi	77-99°C	G1"/G3/4"
SH-50	50L	13.2	55x36x59	5-8bar/72.5-116psi	77-99°C	G1"/G3/4"
SH-60	60L	15.8	48x45x48	5-8bar/72.5-116psi	77-99°C	G1"/G3/4"
SH-80	80L	21.1	59x45x48	5-8bar/72.5-116psi	77-99°C	G1"/G3/4"
SH-100	100L	26.4	72x45x48	5-8bar/72.5-116psi	77-99°C	G1"/G3/4"

1升(L)=0.2641721美制加仑(us gal)=0.2199692英制加仑(uk gal)

升(L)	1	2	5	8	12	19	24	36	50	60	80	100	150	200	300	500	1000
美制加仑(us gal)	0.26	0.52	1.32	2.11	3.17	5.01	6.34	9.51	13.2	15.85	21.13	26.41	39.62	52.83	79.25	132	264
英制加仑(uk gal)	0.21	0.43	1.09	1.75	2.63	4.17	5.27	7.91	10.99	13.19	17.59	21.99	32.99	43.99	65.99	109.98	219.96



**TEST CABLE PLUG  
LS-1 PLUG**



**EUROPE PLUG**



**AUSTRALIA PLUG**



**AUSTRALIA SOCKET**



**BRITISH PLUG**



**GERMANY SOCKET**

**LS-1**



**A** 接1米欧插(电源)和25-40或者60cm短线无插头(电机)  
Connect 1 meter europe plug(power),25-40 or 60cm cable without plug(motor)



**E** 接英国插头(电源) independent connect british plug for power,no need cable for motor



**B** 接英国插头(电源)和60cm短线无插头(电机)  
connect british plug for power, 25-40 or 60cm cable for motor



**F** 接2根短线无插头(电源和电机)  
two short cable without plug(25-40 or 60cm),one for power,one for motor



**C** 单独接1米欧插(电源), 不接电机  
indepent connect one meter cable (power), no need for cable for motor



**G** 接1米欧插(电源)和60cm德国插座(电机)  
connect one meter cable(power),60cm connect germany socketfor motor



**D** 单独接灰色测试线(电源), 不接电机  
indepent connect british plug for power,no need cable for motor



### LS-2



**A** 接1米欧插(电源)和25-40或者60cm短线无插头(电机)  
connect 1 meter europe plug(power),25-40 or 60cm cable without plug(motor)



**E** 接英国插头(电源)  
indepent connect british plug for power,no need cable for motor



**B** 接英国插头(电源)和60cm短线无插头(电机)  
connect british plug for power,25-40 or 60cm cable for motor



**F** 接2根短线无插头(电源和电机)  
two short cable without plug(25-40 or 60cm), one for power,one for motor



**C** 单独接1米欧插(电源), 不接电机  
indepent connect one meter cable(power),no need for cable for motor



**G** 接1米欧插(电源)和60cm德国插座(电机)  
connect one meter cable(power),60cm connect germany socketfor motor



**D** 单独接灰色测试线(电源), 不接电机  
indepent connect the gray test cable(power),no need cable for motor



### LS-3



**A** 接1米欧插(电源)和25-40或者60cm短线无插头(电机)  
connect 1 meter europe plug(power),25-40 or 60cm cable without plug(motor)



**E** 接英国插头(电源)  
indepent connect british plug for power, no need cable for motor



**B** 接英国插头(电源)和60cm短线无插头(电机)  
connect british plug for power,25-40 or 60cm cable for motor



**F** 接2根短线无插头(电源和电机)  
two short cable without plug(25-40 or 60cm), one for power,one for motor



**C** 单独接1米欧插(电源), 不接电机  
indepent connect one meter cable(power),no need for cable for motor



**G** 接1米欧插(电源)和60cm德国插座(电机)  
connect one meter cable(power),60cm connect germany socketfor motor



**D** 单独接灰色测试线(电源), 不接电机  
indepent connect the gray test cable(power),no need cable for motor



### LS-4



**A** 单独接灰色测试线(电源), 不接电机  
indepent connect the gray test cable(power),no need cable for motor



**B** 单独接1米欧插(电源), 不接电机  
indepent connect one meter cable(power),no need for cable for motot



### LS-5



**A** 接1米欧插(电源)和25-40或者60cm短线无插头(电机)  
connect 1 meter europe plug(power),25-40 or 60cm cable without plug(motor)



**E** 接英国插头(电源)  
indepent connect british plug for power,no need cable for motor



**B** 接英国插头(电源)和60cm短线无插头(电机)  
connect british plug for power,25-40 or 60cm cable for motor



**F** 接2根短线无插头(电源和电机)  
two short cable without plug(25-40 or 60cm), one for power,one for motor



**C** 单独接1米欧插(电源), 不接电机  
indepent connect one meter cable(power),no need for cable for motor



**G** 接1米欧插(电源)和60cm德国插座(电机)  
connect one meter cable(power),60cm connect germany socketfor motor



**D** 单独接灰色测试线(电源), 不接电机  
indepent connect the gray test cable(power),no need cable for motor



### LS-6



**A** 接1米欧插(电源)和25-40或者60cm短线无插头(电机)  
connect 1 meter europe plug(power),25-40 or 60cm cable without plug(motor)



**C** 单独接1米欧插(电源), 不接电机  
indepent connect one meter cable(power),no need for cable for motor



**B** 接英国插头(电源)和60cm短线无插头(电机)  
connect british plug for power,25-40 or 60cm cable for motor



**D** 单独接灰色测试线(电源), 不接电机  
indepent connect the gray test cable(power),no need cable for motor



### LS-6B



**A** 接1米欧插(电源)和25-40或者60cm短线无插头(电机)  
connect 1 meter europe plug(power),25-40 or 60cm cable without plug(motor)



**D** 单独接灰色测试线(电源), 不接电机  
indepent connect the gray test cable(power),no need cable for motor



**B** 接英国插头(电源)和60cm短线无插头(电机)  
connect british plug for power,25-40 or 60cm cable for motor



**E** 接英国插头(电源)  
indepent connect british plug for power,no need cable for motor



**C** 单独接1米欧插(电源), 不接电机  
indepent connect one meter cable(power),no need for cable for motor



**G** 接1米欧插(电源)和60cm德国插座(电机)  
connect one meter cable(power),60cm connect germany socketfor motor





### LS-8A



**A** 单独接灰色测试线（电源），不接电机  
independent connect the gray test cable(power),no need cable for motor



**B** 单独接1米欧插（电源），不接电机  
independent connect one meter cable(power),no need for cable for motot



### LS-8



**A** 接1米欧插（电源）和25-40或者60cm短线无插头（电机）  
connect 1 meter europe plug(power),25-40 or 60cm cable without plug(motor)



**E** 接英国插头（电源）  
independent connect british plug for power,no need cable for motor



**B** 接英国插头（电源）和60cm短线无插头（电机）  
connect british plug for power,25-40 or 60cm cable for motor



**F** 接2根短线无插头（电源和电机）  
two short cable without plug(25-40 or 60cm), one for power,one for motor



**C** 单独接1米欧插（电源），不接电机  
independent connect one meter cable(power),no need for cable for motor



**D** 单独接灰色测试线（电源），不接电机  
independent connect the gray test cable(power),no need cable for motor



**G** 接1米欧插（电源）和60cm德国插座（电机）  
connect one meter cable(power),60cm connect germany socketror motor



#### 接线剥皮长度:

LS-1: 直插、弯插、英插: 外皮剥线: 2.5cm  
两根短线: 一头3cm, 一头2.5cm  
铜线外皮: 0.7cm  
LS-2: 直插、弯插、英插: 外皮剥线: 5cm  
两根短线: 一头5cm, 一头3cm  
铜线外皮: 1cm

LS-3/LS-3B/LS-4/LS-5/LS-6/LS-6A/LS-6B:  
直插、弯插、英插: 外皮剥线: 3cm  
两根短线: 外皮剥线: 3cm  
铜线外皮: 1cm  
LS-8: 直线、弯插、英插: 外皮剥线: 3cm  
两根短线: 外皮剥线: 3cm  
铜线外皮: 0.7cm

MC-1: 直插、弯插、英插: 外皮剥线: 6cm  
两根短线: 一头6cm, 一头3cm  
铜线外皮: 1cm  
MC-9: 直插、弯插、英插: 外皮剥线: 8cm  
两根短线: 一头8cm, 一头3cm  
铜线外皮: 1cm



**Ms Snow Zhao**  
snow@snowate.com  
snow@membranehousing.org  
Mobile: +86-15030811699  
(WhatsApp, WeChat, Skype, Viber)